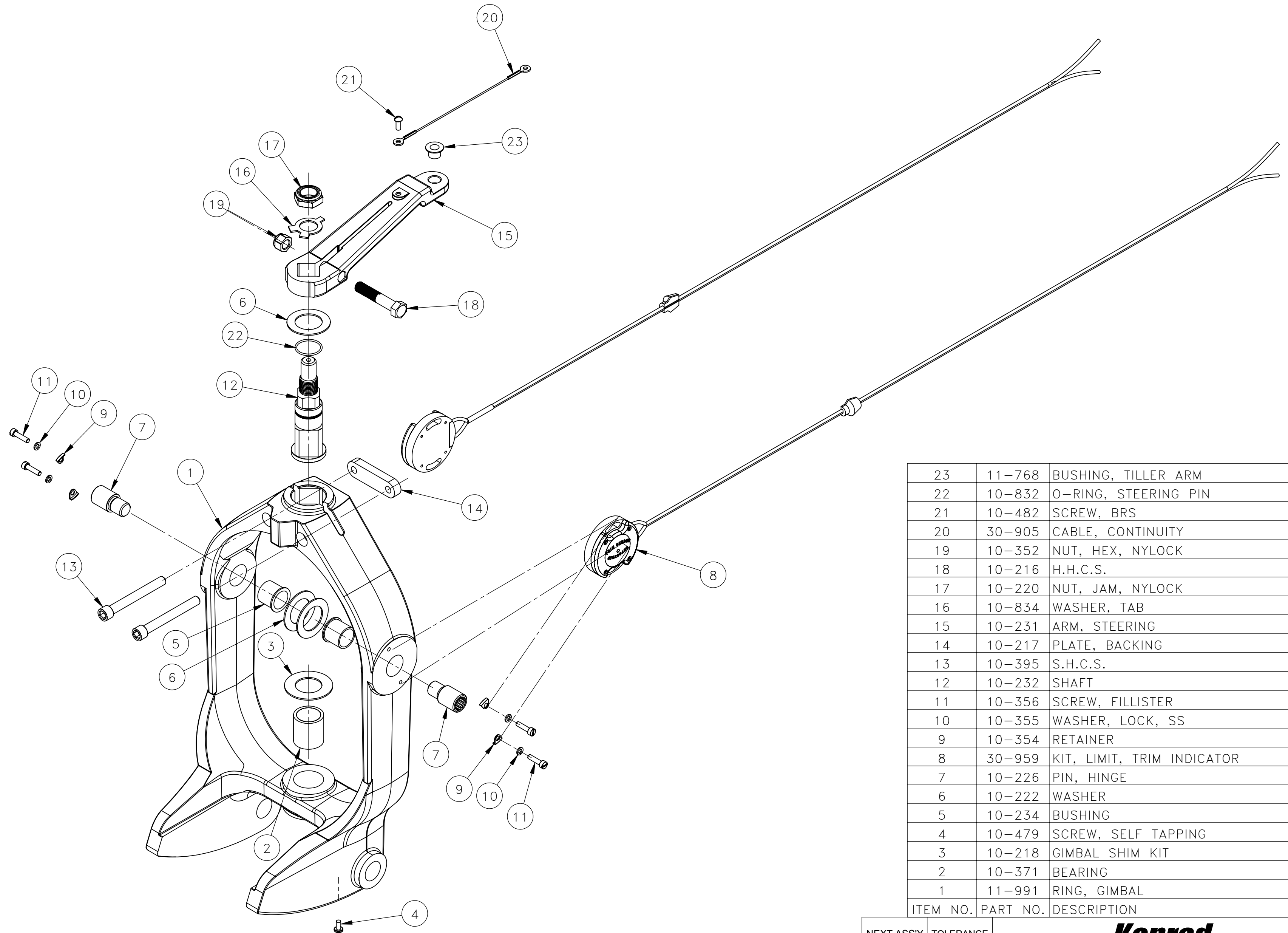


DATE	SYM	REVISION	DR



23	11-768	BUSHING, TILLER ARM	1
22	10-832	O-RING, STEERING PIN	1
21	10-482	SCREW, BRS	1
20	30-905	CABLE, CONTINUITY	1
19	10-352	NUT, HEX, NYLOCK	1
18	10-216	H.H.C.S.	1
17	10-220	NUT, JAM, NYLOCK	1
16	10-834	WASHER, TAB	1
15	10-231	ARM, STEERING	1
14	10-217	PLATE, BACKING	1
13	10-395	S.H.C.S.	2
12	10-232	SHAFT	1
11	10-356	SCREW, FILLISTER	4
10	10-355	WASHER, LOCK, SS	4
9	10-354	RETAINER	4
8	30-959	KIT, LIMIT, TRIM INDICATOR	1
7	10-226	PIN, HINGE	2
6	10-222	WASHER	3
5	10-234	BUSHING	2
4	10-479	SCREW, SELF TAPPING	1
3	10-218	GIMBAL SHIM KIT	1
2	10-371	BEARING	1
1	11-991	RING, GIMBAL	1
ITEM NO.	PART NO.	DESCRIPTION	QTY.

THIS DOCUMENT AND THE INFORMATION CONTAINED HEREIN IS CONFIDENTIAL AND PROPRIETARY PROPERTY AND MUST NOT BE USED, REPRODUCED, OR ITS CONTENT DISCLOSED, IN WHOLE OR IN PART, WITHOUT PRIOR WRITTEN CONSENT OF KONRAD MARINE. DO NOT SCALE DRAWING WEIGHT: 15.03LBS	NEXT ASSY	TOLERANCE	Konrad	
	30-014 30-170 30-297	.X ± .020 .XX ± .010 .XXX ± .005	MAT'L:	SCALE: DRAWN BY: SW 1:3 APP.BY:
			TITLE: ASSY, GIMBAL RING, 500 SERIES	DRAWING NUMBER 30-004M
		DATE: 11/3/03		